

Description circles

large

tall

short

small

round

furry

smooth

prickly

soft

hard

shiny

dull

round

slimy

wet

dry

natural

man made

spongy

**has a
colourful
centre**

**has 2
petals**

**has a
round
stem**

**has a
non-
round
stem**

**has 5
petals**

**has hairs
on stem**

**has hairs
on leaves**

**has 4
petals**

**has
spikes**

cold

warm

Life Cycles

Butterfly

You are eaten by ants	1	x
You are trampled	1	x
You fall from a leaf	1	x
You are a healthy egg	1	✓

You are eaten by birds	2	x
You fall from your leaf	2	x
You are a healthy caterpillar	2	✓

Your leaves are covered with salt spray from a storm	3	x
You become a chrysalis	3	✓

You become a butterfly	4	✓
------------------------	---	---

Shrew

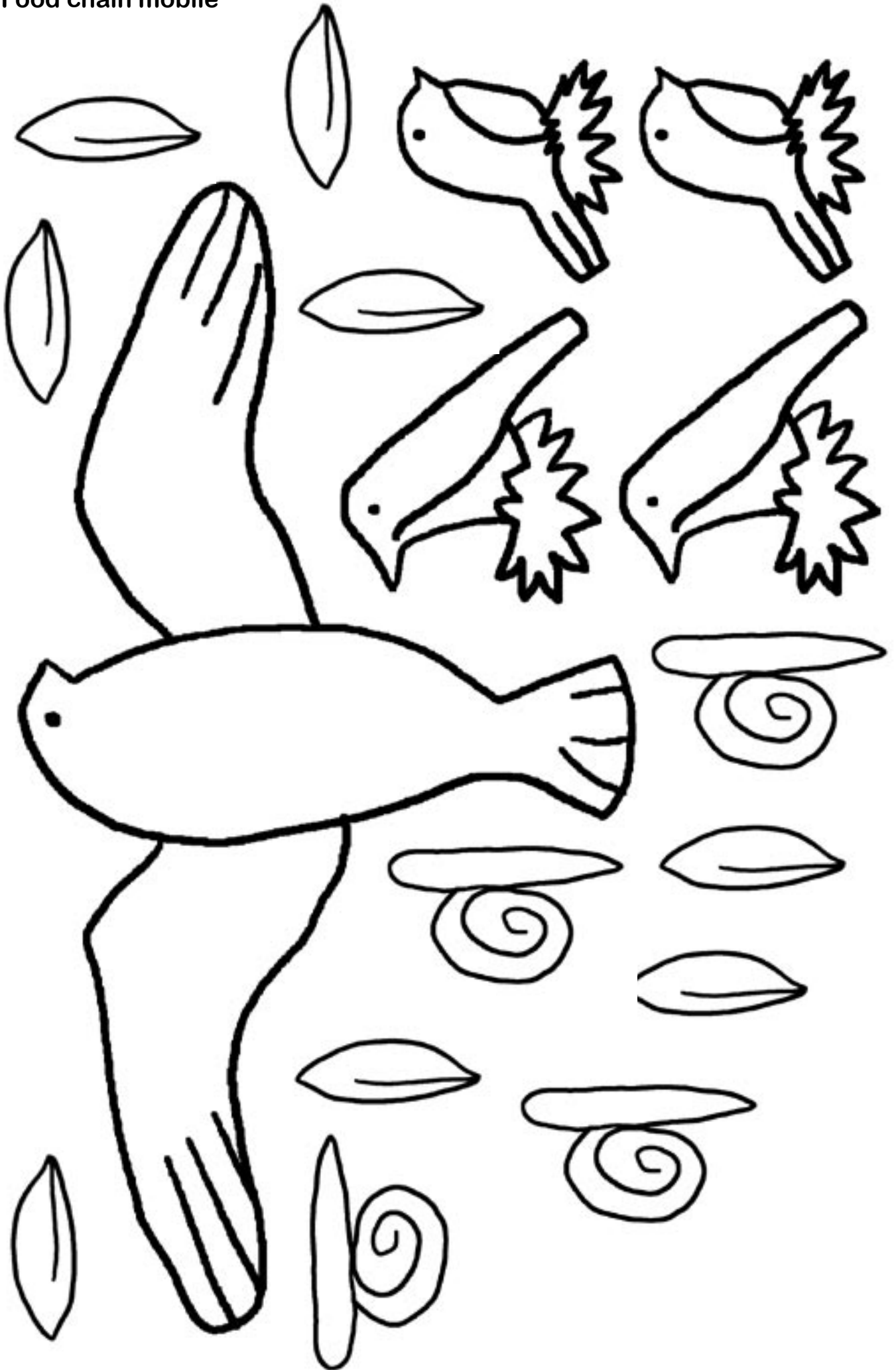
You get cold	1	x
You are eaten by a bird of prey	1	x
You get trapped in a bottle	1	x
You find lots of insects to eat	1	✓

You cannot find enough food	2	x
You are eaten by a bird of prey	2	x
You get cold	2	x
You find lots of insects to eat	2	✓

You are eaten by a bird of prey	3	x
You find lots of insects to eat	3	✓

You have a litter of young	4	✓
----------------------------	---	---

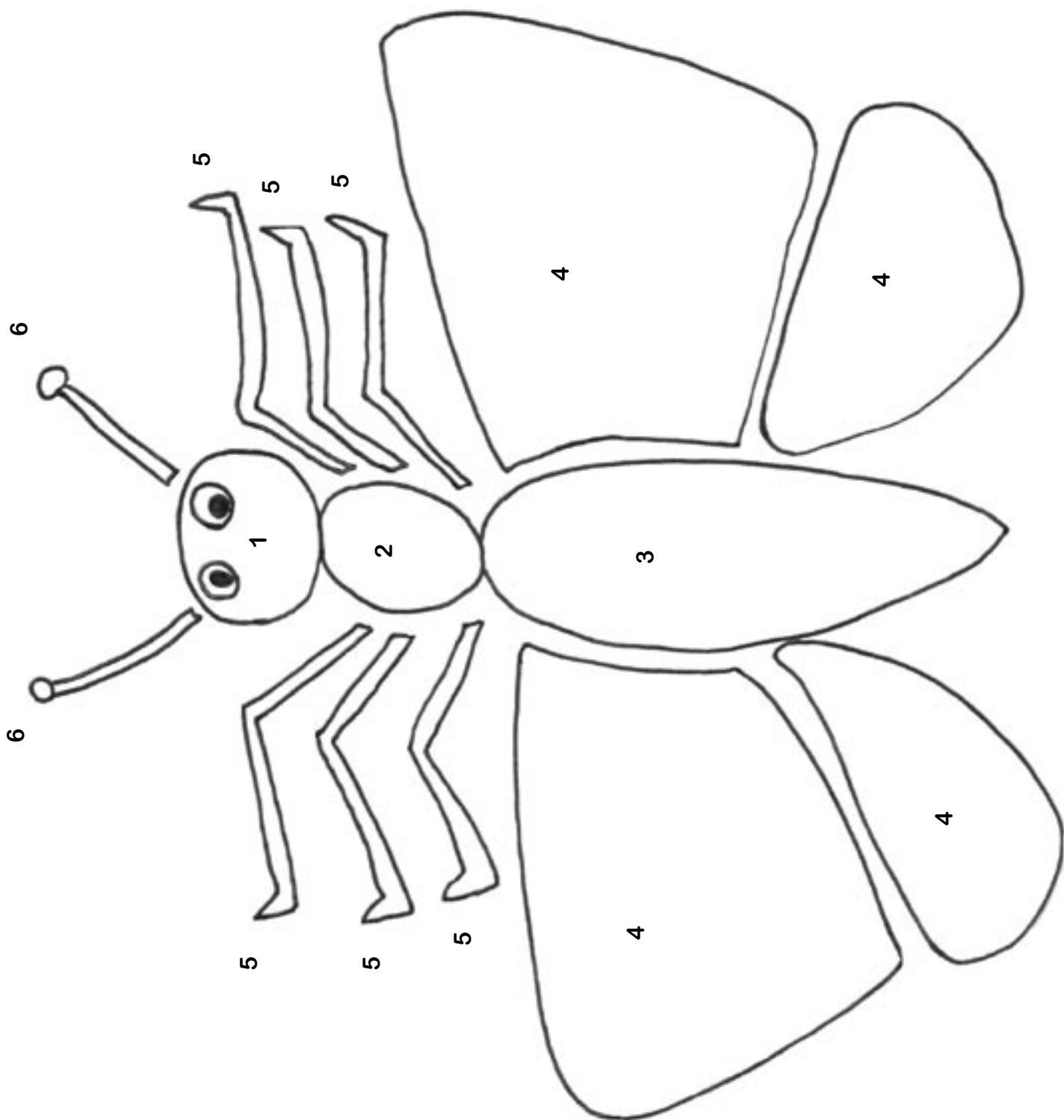
Food chain mobile



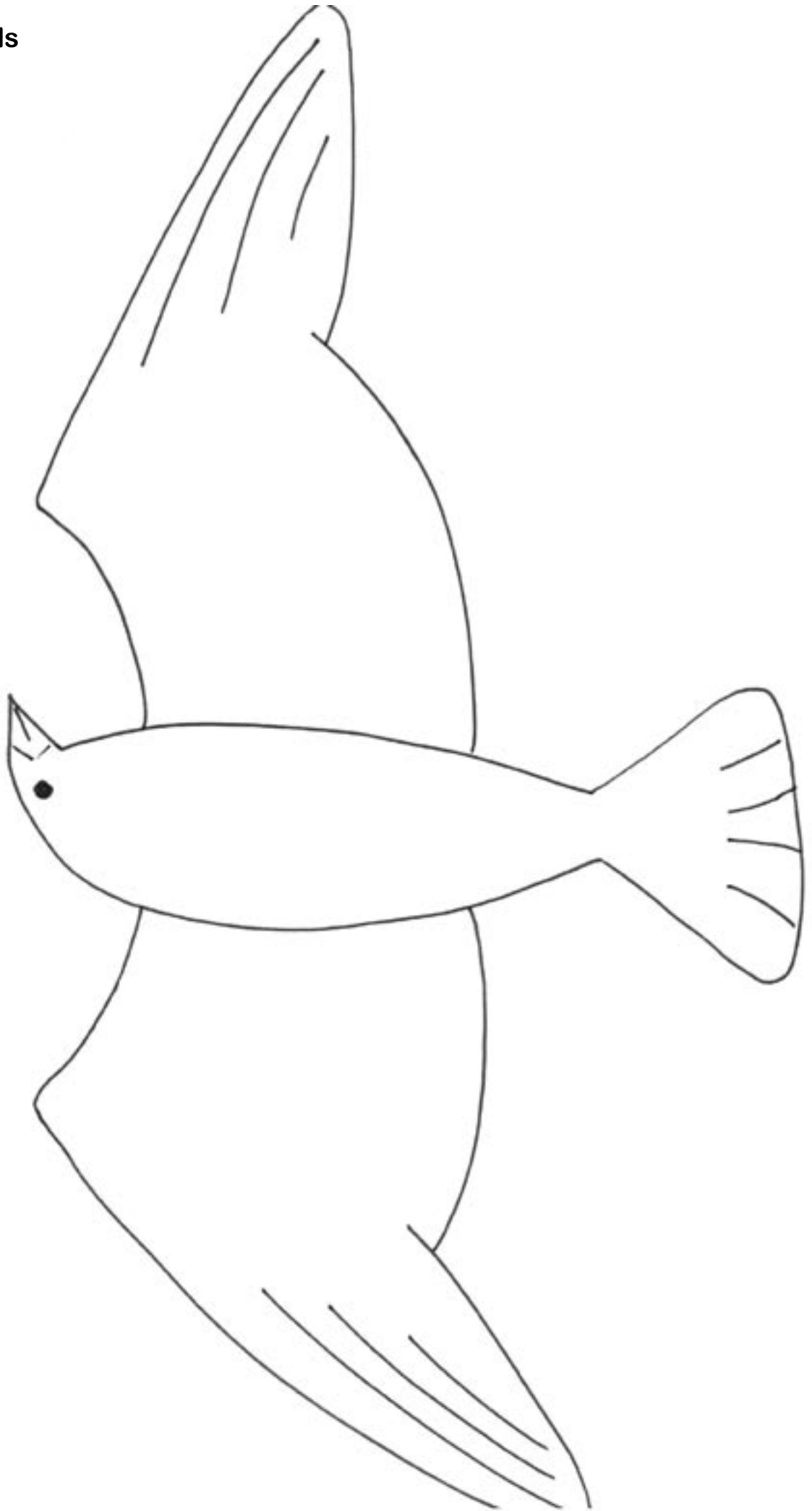
Minibeast safari

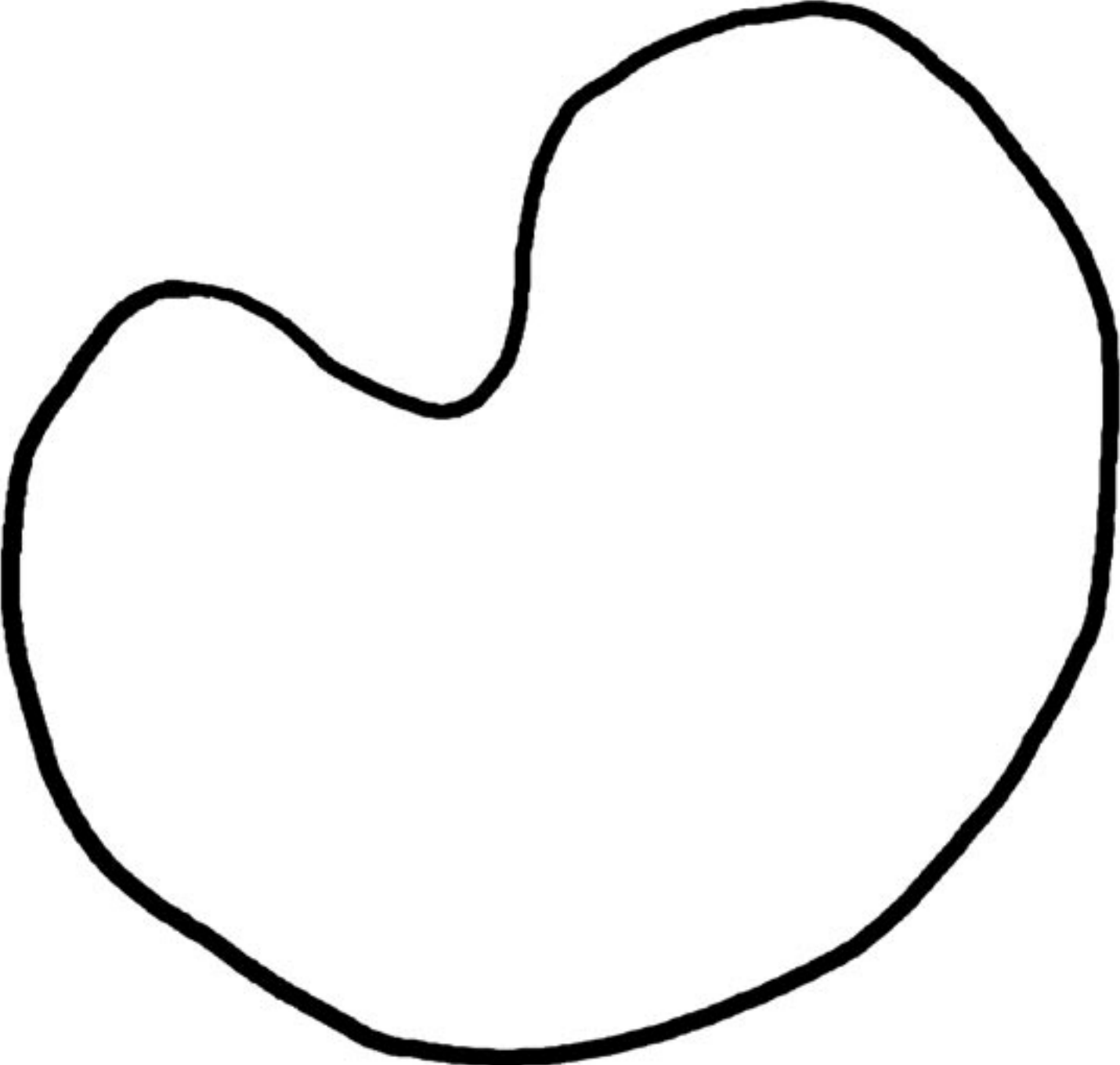
Name:									
	Beetles	Butterflies	Snails	Spiders	Worms	Other minibeasts			
Under stones									
Under logs									
Under plants									
In plant litter									
On flowers									
In the grass									
In the air									
In the air									
On flowers									
In dung									
In other places									

Butterfly bodies

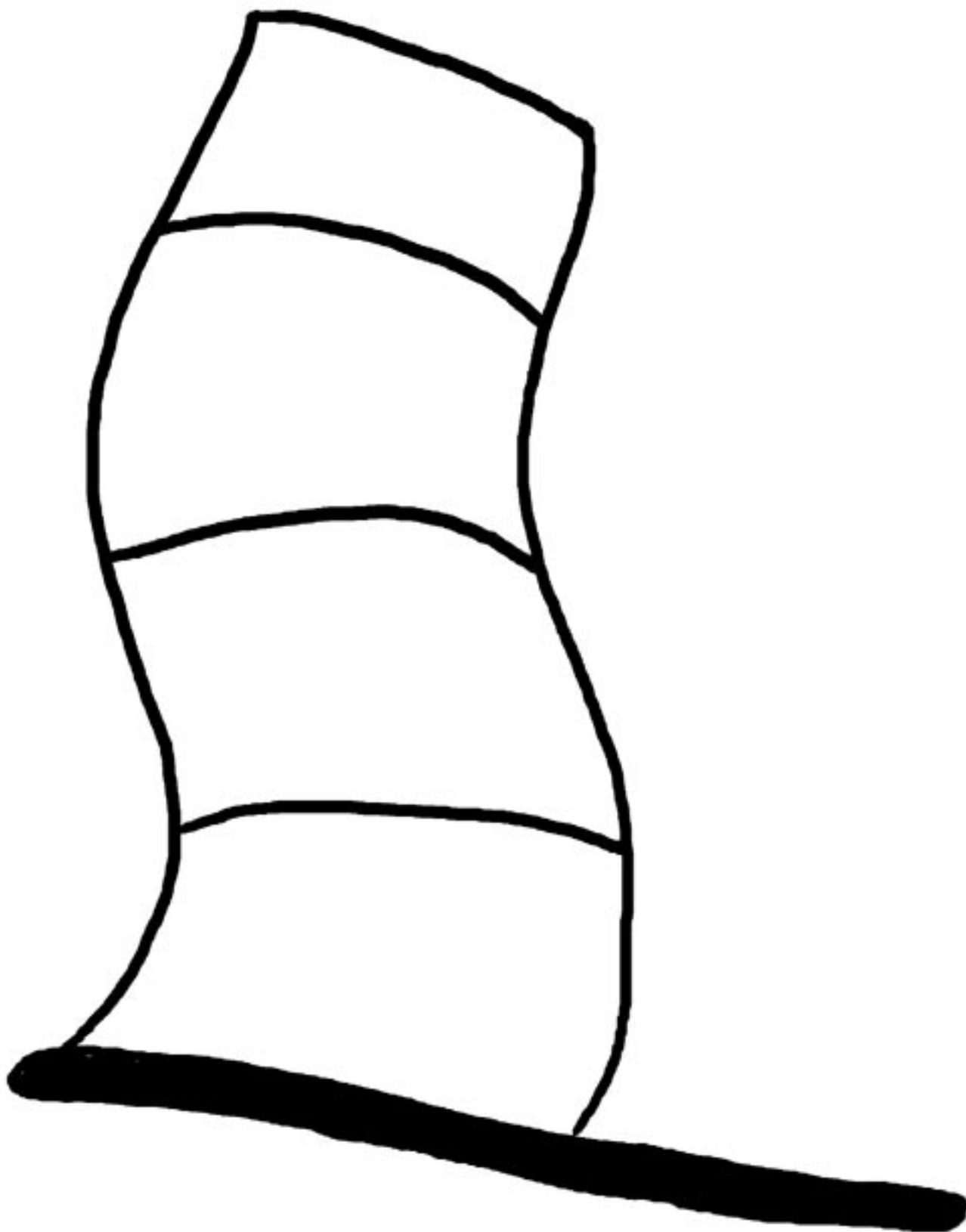


Flapping birds

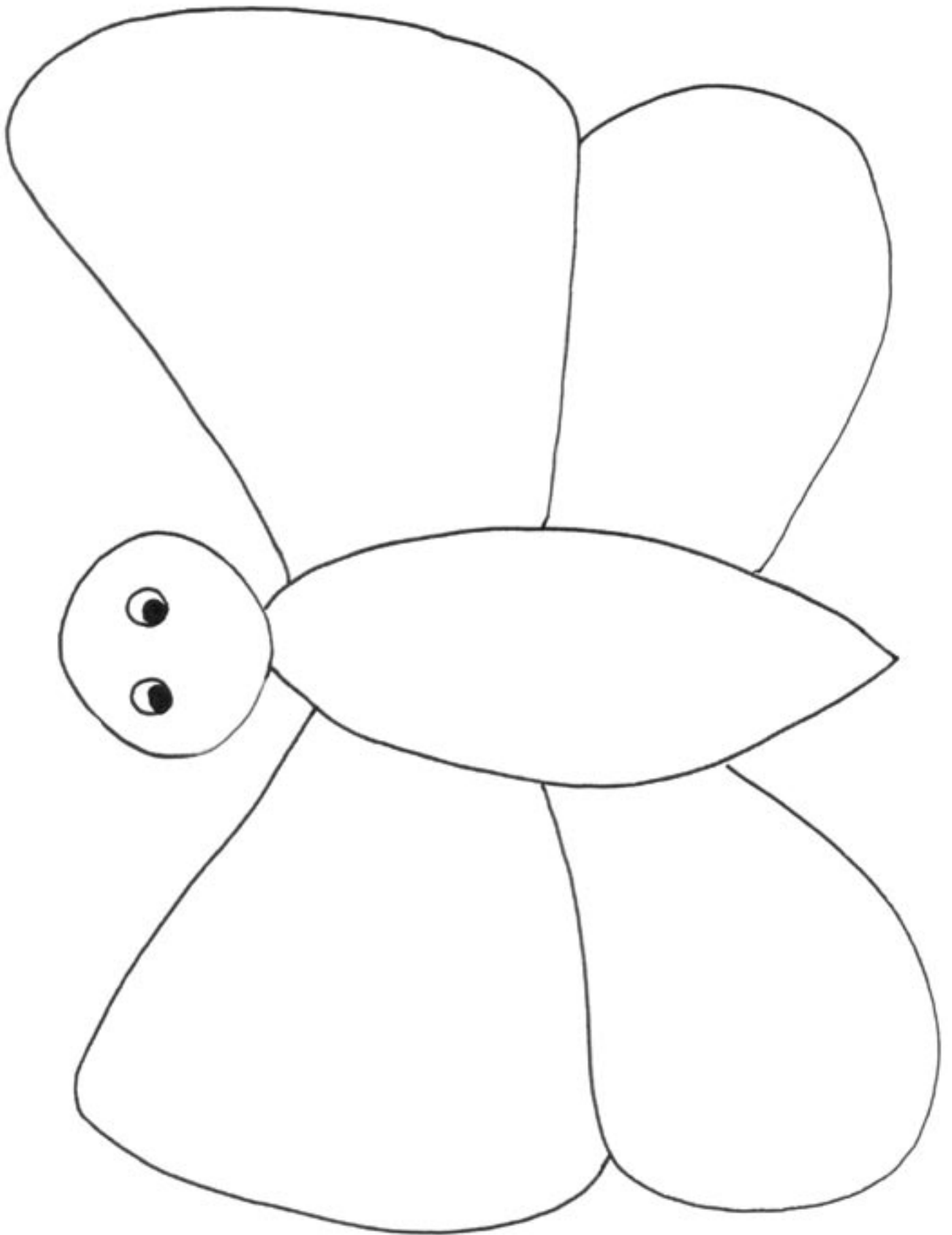




Colours



Camouflage butterflies



Butterfly models

